

Waterhog Fall Day Entry Mats



Waterhog Fall Day Entry Mats boast an autumn themed pattern which brightens up any entrance while helping to clean shoes. These fall day waterhog mats offer a raised surface design to scrape off dirt and debris as well as wipe away water.

- The Waterhog Fall Day Entry Mat also features a sturdy, water-dam border around the perimeter that can contain up to 1.5 gallons/square yard of water to help keep the surrounding floors safe & dry.
- The surface of these Waterhog Fall Day Entry Mats are constructed from a quick drying, anti-static polypropylene that is stain, fade and mildew resistant, which makes the Waterhog Fall Day a perfect floor mat for both inside and outdoor locations.
- To clean these Waterhog mats, simply vacuum, hose off and allow to air dry.
- Waterhog Fall Day Entry Mats are now made with 20% recycled content.

Item No: WHFDE

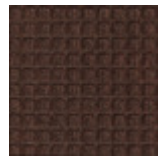
Standard Sizes (Approximate)

Size	Qty. 1	Qty. 2-10	Qty. 11-25	Qty. 26+
18" x 28"	\$16.92	\$15.24	\$14.88	\$13.96
2' x 3'	\$29.20	\$28.03	\$26.28	\$24.82
2' x 5'	\$58.52	\$56.60	\$54.44	\$53.32
3' x 5'	\$62.02	\$59.53	\$55.81	\$52.72
3' x 7'	\$117.52	\$115.80	\$113.32	\$112.24
3' x 8'	\$121.24	\$116.40	\$109.12	\$103.06
3' x 10'	\$124.02	\$119.05	\$111.61	\$105.42
4' x 6'	\$99.21	\$95.24	\$89.29	\$84.33

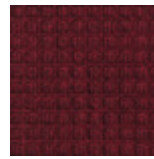
Available Colors



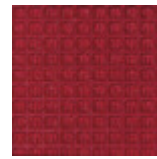
Charcoal



Dark Brown



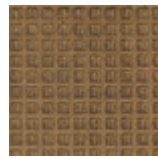
Red Black



Solid Red



Orange



Gold



Mid Brown



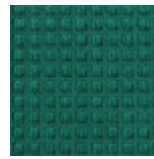
Yellow



White



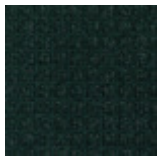
Medium Grey



Aquamarine



Light Green



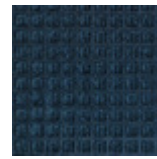
Evergreen



Bluestone



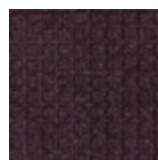
Medium Blue



Navy



Purple



Bordeaux